



Welcome to the March issue of the Life Change Care magazine.

Welcome to the March 2024 Life Change Care news letter. Spring seems to have opened her windows to the Sun and the trees are full of busy bird song.

Last month we said goodbye to Grace Dinn, as she left for pastures, new, and this month, we welcome back, Gillian, Bostock, Kellar, as manager of Stonebrook. Exciting times lie ahead for this home under new leadership.

Thanks to the incredibly hard work of Alicia, Lindsey, and the homes' managers. We are reaching full occupancy across the homes for the first time in the nine year history of Life Change Care.

Booth House had a successful OFSTED inspection last February, achieving the status of overall good. Congratulations to Megan, Jackie and the Booth House team.

The most important thing, of course, is that our children are settled and generally emotionally regulated, thriving in the outstanding care and commitment of all involved with the Life Change Care.

Congratulations to one of our therapists Alastair and his partner who gave birth to a baby girl last Friday.

I hope you all enjoy my sketches of March hares which I thought would add a taste of spring to this addition.

Julie



In this issue, you will find many of the usual sections including:

- Anniversaries
- Birthdays
- New starters
- Employee of the month
- Feedback
- Training
- Policies and procedures
- etc.

BIRTHDAYS (March)



Happy Birthday to Caroline Atha, who celebrates her birthday on the 23rd March!



Happy Birthday to Jordan who celebrates her birthday on the 25th March!



Happy Birthday to Olivia who celebrates her birthday on the 27th March!

Anniversaries March 2024



Victoria Celebrates her 1 year anniversary with us on the 8th March!

Anthony Celebrates his 2 year anniversary with us on the 24th March!

Lindsey Celebrates her 5 year anniversary with us on the 24th March!



Pennine View staff team would like to congratulate Sam Redmond on completing her Level 5 leadership and Management. Well done Sam!

NEW STARTERS (March)



Lucy has joined the team in February!



Gillian is returning to the Stonebrook team as the new Registered Manager!

LEAVERS (March)



We wish Grace all the best for the Future! Thank you for all your hard work.

EMPLOYEE OF THE MONTH – February 2024

Well done to each of our employees of the month.

BOOTH HOUSE



Congratulations to Victoria who was the employee of the month for Booth House in February!

PENNINE VIEW



Congratulations to Nigel who was the employee of the month for Pennine View in February!

STONEBROOK HOUSE

Congratulations to Nicola who was the employee of the month for Stonebrook in February!

POLICIES

As we strive to improve our service, our policies and procedures are added to and updated on a regular basis. During February, the following policies and forms have been published or updated:

Policies and Documents New and Updated

- Form 3695 - Consent to Bedroom Search .docx
- Form 3696 - NMT Assessment Requirement Form .docx
- Document 3697 - SB - Rules of the Home .docx
- Form 3698 - Sub Contractors Risk Assessment .docx
- Form 3690 - Consent form - Reg 44 to view child files .docx

Ensure that you take the time to familiarise yourself with any new or updated policies. If you have any questions, please discuss these with your manager.


Policies and procedures are typically located within the **Generic – all homes** folder. Where a policy needs to differ for a particular home, a similarly named policy will be stored in that home's folder. If a home has its own specific policy, it will supersede the generic policy that will apply to the remaining homes.

If you have difficulty locating a particular policy in the **Policies, Procedures, and Forms** library, a complete list can be found in the **Policies procedures and forms accessible index.pdf** document.

Policies, Procedures, and Forms


 Name 

 Booth House

 Generic - all homes

 Pennine View

 Stonebrook House

 Policies procedures and forms accessible index.pdf

SOCIAL MEDIA

In order to help promote Life Change Care and support our efforts to recruit more team members, we have been increasing our activities online by engaging with colleagues, associates, and potential recruits on **Facebook** and **LinkedIn**.

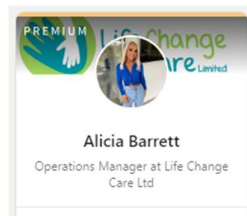
You are our best ambassadors. The more that you promote what great work that you and your colleagues do at Life Change Care, the more people will be attracted to join us and support the team.

Please support our initiatives online by following us on **Facebook** and connecting to us on **LinkedIn**. The more that you **like** and **share** our posts, the wider our news will travel.

If you are on Facebook, please follow our page: <https://www.facebook.com/LifeChangeCare>

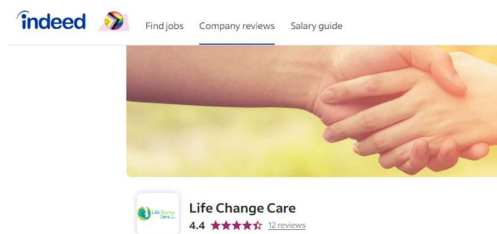


If you are on LinkedIn, please connect to Alicia Barrett (our amazing Operations Manager): <https://www.linkedin.com/>



Finally, please share your opinion of Life Change Care on our [Indeed](#) page. There is no better way to attract applicants than positive reviews from existing employees. Your help with this initiative would be appreciated.

[Indeed / Life Change Care](#)



If you are interested in the cycle to work scheme please follow the link for more information and the application if you wish to join!

[The UK's Most Popular Cycle to Work Benefit - Cyclescheme](#)



cyclescheme

How much can I save?

Hybrid Bike
£1,400



RRP: £1,400

| Basic Rate: | | Higher Rate: | |
|---------------------|---------------|---------------------|-------------|
| Our Price | £1,050 | Our Price | £910 |
| Basic Rate: | | Higher Rate: | |
| Monthly Cost: | £79 | Monthly Cost: | £68 |
| That's a Saving of: | £350 | That's a Saving of: | £490 |

End of hire cost: £98

Scan here to see how much you can save at cyclescheme.co.uk



BLACKHAWK extras



cyclescheme

How much can I save?

Example Package
Road Bike
£2,000+

Lock
Lamp
Rings
Rings



RRP: £2,150

| Basic Rate: | | Higher Rate: | |
|---------------------|---------------|---------------------|---------------|
| Our Price | £1,612 | Our Price | £1,397 |
| Basic Rate: | | Higher Rate: | |
| Monthly Cost: | £122 | Monthly Cost: | £104 |
| That's a Saving of: | £537 | That's a Saving of: | £752 |

End of hire cost: £150

Scan here to see how much you can save at cyclescheme.co.uk



BLACKHAWK extras

TEAM INTERVIEW

Claire Stowell

Position held: Senior Therapeutic Care Worker

How long worked in care? 16 Months

What did you do before working for LCC? Before I worked in Care, I worked in a Primary school for 14 years as a HLTA, teaching across all year's groups, and year 6 maths and English.

What do you enjoy most about your job? Spending time with interesting young people, having fun and being silly.

What do you like to do outside of work? Outside of work I love to go for long walks with my dogs, watch football, play computer games, and read.

Where do you see yourself in 5 years? In 5 years' time I would like to be still enjoying my job at SB and looking forward to a lovely beach holiday with my family